

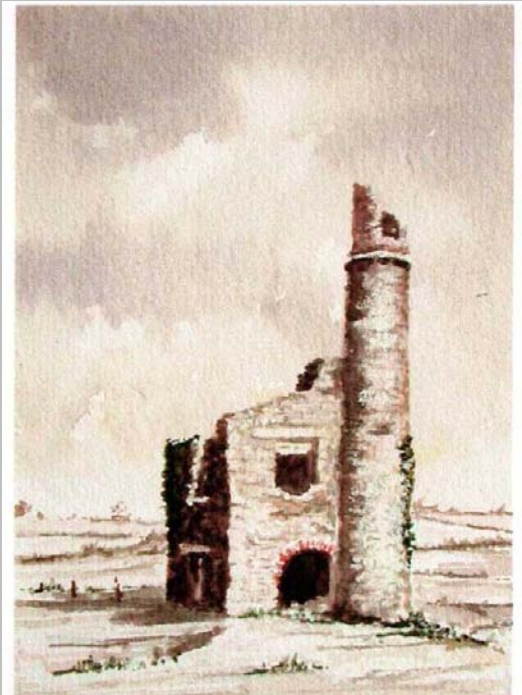
Serving Gwennap Parish

Contents

| Page | Item |
|------|----------------------|
| 1. | Introduction |
| 2. | Parish Council News |
| 3. | Parish Council News |
| 4. | Footpaths |
| 5. | Historic Churchyards |
| 6. | Planning Procedures |
| 7. | Frogpool/Cusgarne |
| 8. | Croffthandy |
| 9. | Gwennap |
| 10. | Parish Map |
| 11. | General Interest |
| 12. | General Interest |

Hello !

Welcome to your Newsletter



Eldon's engine house
United Mines

Eric Rabjohns

This picture shows Eldon's Engine House at the entrance to the United Downs Waste Disposal Site, as painted by Eric Rabjohns, the Carharrack historian, artist (and 'Arthur Daley'!).

Eldon's was at one time known locally as 'Ivy Stack'. This 30 inch engine and house dates from 1829. It was used to pump water from below to feed the larger thirsty pumping engines nearby. In 1900 - 1905 it was used as an office and its roof was reduced. Do you have a favourite picture - well send it in and we will print it.

This Newsletter

Welcome to the first issue of what we hope will be a long running quarterly newsletter, bringing news and information to the residents of Gwennap Parish.

This is one of a number of key improvements in communication with Gwennap parishioners.

The newsletter, current news and information will also be available on a website which is updated each month.

Both the website and the

newsletter will bring a wide variety of information to the parishioners. Key parish council issues will be highlighted as well as information on events and Parish activities.

The newsletter and the website are being produced by the Parish Council, but they have articles and events from many different clubs and organisations.

Their success is dependent on you, the reader, to keep the flow of items coming, so if your organisation is not mentioned in this

issue, make sure it is for the next quarterly edition.

This issue of the newsletter has been posted to you. In future it will be delivered by post by volunteers to most properties in Gwennap Parish.

The website address is www.gwennap-parish.net



The next issue will be in time for Christmas

For information on advertising call Kevin Furnish on 01209 820244 or email editor@gwennap-parish.net

This is the meeting programme up to March 2008.

| | |
|---------------------|-------------------------|
| 27th September 2007 | Frogpool Chapel Rooms |
| 25th October 2007 | Crofthandy Village Hall |
| 22nd November 2007 | Gwennap Church Hall |
| 13th December 2007 | Frogpool Chapel Rooms |
| 24th January 2008 | Crofthandy Village Hall |
| 28th February 2008 | Gwennap Church Hall |
| 27th March 2008 | Frogpool Chapel Rooms |

The meetings are generally held on the 4th Thursday of each month at 7pm. The public are welcome to attend and may speak in the first 30mins of the meeting

Gwennap Parish is a rural parish with the three main centres of population – Gwennap, Crofthandy and Frogpool/Cusgarne. There are 1196 voters on the electoral roll.

Each month, the Council meets to deal with the ongoing business and to receive new issues that have arisen.

That business will include the trimming and maintenance of the 61 paths in the parish, under an agreement with the County Council, the maintenance of Gwennap Churchyard and the overall running of Frogpool Cemetery, all aspects of the Playing Field at Pulla Cross, which the Parish Council owns, and commenting on local planning applications.

Then there is specific current business that has to be dealt with.

One such item at the moment is the **Wheal Maid Valley**, purchased by the Parish Council in 2002 with the intention of making safe any contamination caused through mining waste and then returning the valley for use by the general public on foot, bicycles or horse.

At present, we await a report from the Environment Agency which should detail the levels of contamination and their recommendations for remedial work. A detailed project plan for the work will have to be drawn up and cleared by the Environment Agency before anything can start on site.

Cornwall County Council owns some of the adjoining land and since the whole area was awarded Mining World Heritage Site status last year, they are



anxious to protect the site from damage. This is why they began fencing the perimeter, but work has halted due to continued vandalism. It is hoped that those responsible will eventually see the wider picture.

Old Carnon Hill – proposed traffic changes.

As part of their Parish Plan, Feock Parish Council received requests from their residents to stop the flow of through traffic that uses Old Carnon Hill. In conjunction with the County Surveyor, the proposal is to prevent traffic from travelling up the hill, making it turn right and then left onto the A39 at the new Carnon Gate roundabout. Buses will still be able to use the hill.

Gwennap Parish Council is opposed to this, as many of our residents use the route to shop or visit the Doctor's Surgery, and they feel the proposed alternative to be unacceptable.

Historic Churchyards Group -see separate article.

Mineral Tramways Heritage Project Group.

The Parish Council has two Councillors on this County Council run group. They meet regularly to plan improvements to Sites of interest and trails for public use across the local mining area.

An example in our own parish would be the proposed extension of a path through the Wheal Maid Valley linking with similar paths in Carharrack and Lanner.

Gwennap Parish Playing Field Association (GPPA)

This is a sub committee of the Parish Council, set up to run the affairs of the Playing Field. It is made up of Parish Councillors and other interested individuals. There is always room for anyone interested to join!

Gwennap Parish Council

YOUR COUNCILLORS

| | | |
|--|---|--------------|
| IRVIN HERBERT (Chairman) | Roseleigh Frogpool Truro TR4 8RS | 01872 863987 |
| JOHN WHARTON (Vice Chairman) | Whealmaid Crofthandy Redruth TR16 5JE | |
| RICHARD SNELL | Crofthandy Redruth TR16 5JE | 01209 820556 |
| DONNA SQUIBB | 22 Carn View Estate Gwennap Redruth TR16 6BE | 01209 820818 |
| KEVIN FURNISH | Hale Mills Cottage Wheal Henry Twelveheads Truro TR4 8SW | 01209 820244 |
| RAY HUMBLE | Chiswell Trehaddle Cusgarne Truro TR4 8RN | 01872 864011 |
| JULIE WARD | Harmony Cottage Goongumpas Crofthandy Redruth TR16 5JL | |

CLERK

| | | |
|--------------------|--|--------------|
| ALAN BLAMEY | 1, St Aubyns Terrace Pulla Cross Truro TR4 8RZ | 01872 864601 |
|--------------------|--|--------------|

e-mail : clerk@gwennap-parish.net

CARRICK DISTRICT COUNCILLORS :

Judith Whiteley, 17 Church Road, Mylor Bridge, Falmouth 01326 374279

Tony Martin, 50 Lanyon Road, Playing Place, Truro 01872 870683

Chris Ridgers, Cedar Cottage, Trewedna Lane, Perranwell Station 01872 865407

CORNWALL COUNTY COUNCILLOR:

Robert Hichens, Bodrennick, 12a St Peters Hill, Flushing, Falmouth 01326 374252

To advertise in this newsletter for Christmas please contact:

Kevin Furnish on 01209 820244 or email editor@gwennap-parish.net

Or

Alan Blamey on 01872 864601 or email clerk@gwennap-parish.net

We are also keen to receive comments, letters and articles !!

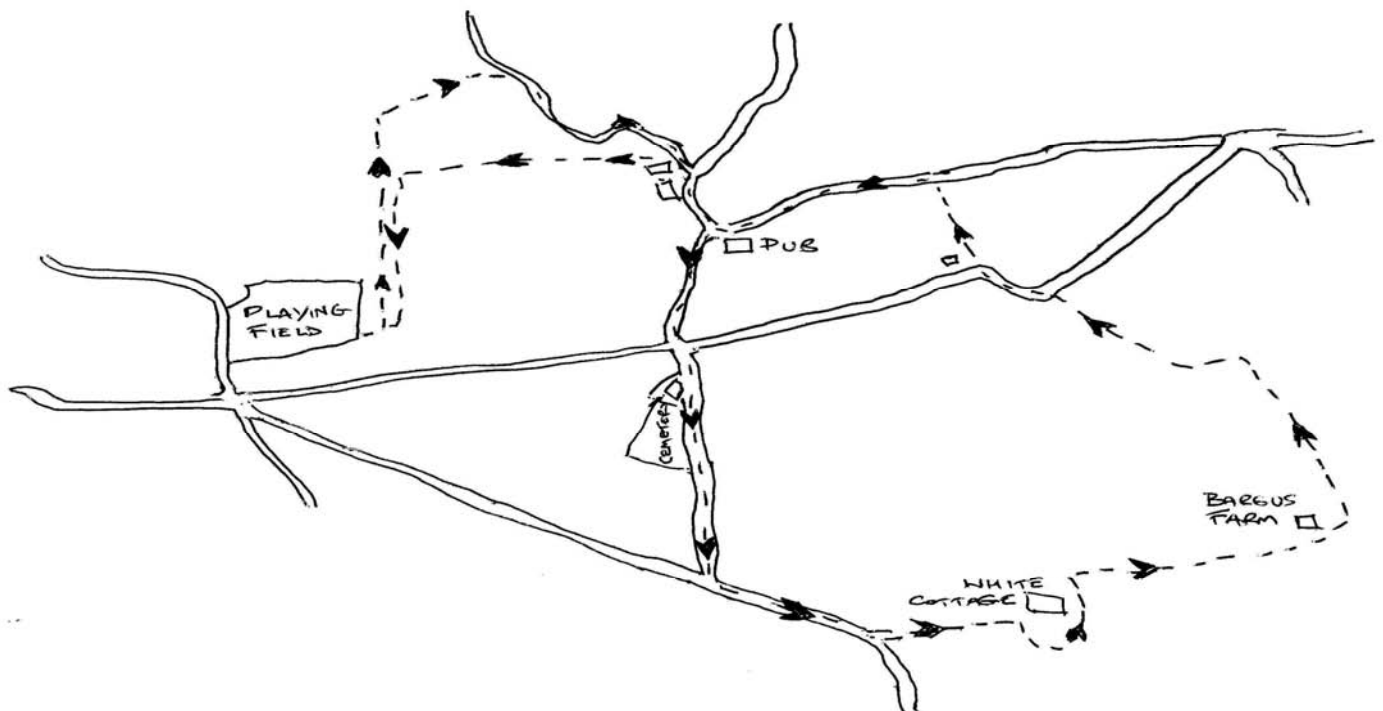
There are 61 paths in our Parish and they fall into one of three categories.

- Footpaths, marked by a yellow arrow, where no bicycles, horses or vehicles are allowed.
- Bridleways, marked in blue, are for walkers, horses or bicycles
- Byways, marked in red, are open to all users including vehicles.

The markings may not currently be clear, but will be renewed by the County Council next year when their Local Maintenance Partnership scheme reaches Gwennap Parish.

A Local Walk

Here is a circular Parish walk of 2.5 miles that will take around an hour and starts/finishes at the Playing Field, Pulla Cross (Parking and toilets). Leave the Playing Field by the bottom pedestrian gate. Turn left and follow the lane past the two stiles then take the first track on the right. After 200 metres turn right, following the tarmac lane to the next junction. Turn right and then bear right up past the Cornish Arms to the Chapel crossroads. Straight across, keep the cemetery on your right, past the Abbatoir. At the next junction turn left down the hill towards Trewedna. Take the **second** 'public footpath' sign on the left, the tarmac lane will loop around "The White Cottage" – note the yellow footpath makers). We have strayed into Perranarworthal Parish now, but they won't mind!. Behind 'White Cottage' you are now faced with three farm gates close to each other, take the stone stile on the right into a field and keep to the field hedge on your right hand side. Over the next stile by the farm gate, keeping to the left hedge before climbing another stile into a lane. Open (and Close!) the gate taking you into and through Bargas Farmyard, bear left up the tarmac lane until it meets the main road (phew, back in Gwennap Parish again!). Straight on for 20 metres, then take the footpath signed on your right past a small farm. Turn left when it meets the road, down the hill towards the Cornish Arms. Bear right at the Pub, then left after the farm. Left again almost immediately, taking the path alongside the end of the farm buildings. Keep to the right as you negotiate the stiles through three fields. At the junction with the lane, turn left and the Playing Field is 200 metres on your right.



Cornish Mining Villages Historic Churchyards Group

With the ever increasing interest worldwide in genealogy, the Mining Villages Historic Churchyards Group was formed to publicise the information available from gravestones in our Churchyards and parochial registers.

With our inclusion in the World Heritage Site status, it is anticipated that more and more people from across the country and abroad will be trying to trace their ancestors who, perhaps, were born in the area but moved away or indeed emigrated. With this in mind, the Group is in the process of constructing a Web Site, which will include details of the graves in the Churchyards, together with history of the five parishes involved.

The web site will be targeted at the overseas visitors market as a means for families with ancestors from the Mining Villages area to access information on their family history. Gwennap Church currently has a web site that is being further developed to include a section on the on the Historic Churchyard project.

The aim of the Group is to make our churchyards safe places, which all can appreciate and enjoy, providing educational and study possibilities for all ages, while preserving the peace and tranquillity associated with graveyards.

The Group has purchased specialist equipment to monitor and record the stability of the headstones/memorials. We have located a relatively cheap and easy remedy for some types of faults, but we do not have funding to carry out large-scale rectification work.

The group is at present working on the design and content of notice boards to be established at the relevant Church areas, these boards will display info on the layout and content of the Churchyards and show links by paths and roads to the other Churchyards.

Group is:, Gwennap, St. Day, Carharrack, Lanner, Stithians.



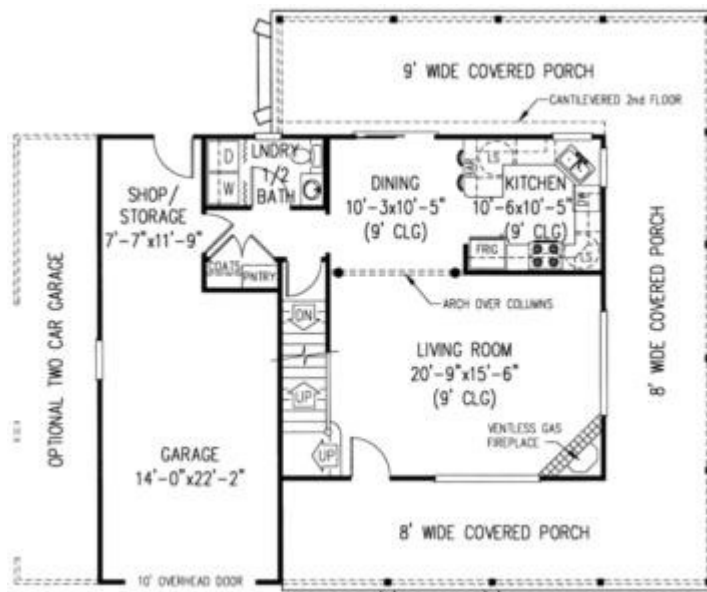
Planning Procedures

The Parish Council is frequently asked about how the planning system works, and, courtesy of the Clerk at Perran-ar-worthal, this detailed explanation appeared in the recent copy of Perran News.

All planning applications must be submitted to Carrick District Council, which is the planning authority in this area.

On receipt of an application, the District Council is required to inform the public and they do this by notification to immediate neighbours, posting a site notice and by sending weekly lists of all applications to local newspapers who normally publish them.

Copies of the weekly list are sent to the relevant Parish Council, as are copies of each application. In addition, Carrick has a planning register on its web site so that new applications can be viewed on-line. Members of the public can view plans at Carrick DC's offices and can submit their views on all planning applications, although this should be done within 21 days of the application being received. All letters are acknowledged and a letter is sent to those involved telling them of the District Council's decision.



All decisions are supported by reasons for either approval or refusal to improve understanding of the decision process. Gwennap Parish Council, which normally meets at 7.00 p.m on the fourth Thursday of each month, considers each application which has been sent to it by the District Council, and a decision is made either to recommend or not to recommend it for approval by the District Council. The Parish Council has no powers in the planning process except that it is a consultee whose opinion is considered along with those of other consultees, such as neighbours, by the District Council when making its decision.

To advertise in this newsletter for Christmas please contact:

Kevin Furnish on 01209 820244 or email editor@gwennap-parish.net

Or

Alan Blamey on 01872 864601 or email clerk@gwennap-parish.net

FROGPOOL METHODIST CHURCH

Minister Rev Peter Facer
Telephone 01326 317427

Sunday Services 10.45 each Sunday morning
Sunday School 10.45 each Sunday morning

Harvest Festival September 23rd 10.45 a.m. Preacher Rev Jim Hunkin
6.00 p.m. Preacher Mr D Tremayne

Christmas Carol Service **Sunday December 16th at 4.00. p.m.**

Weekly Prayer Meeting - Mondays at 3.00 p.m.

Monthly Coffee Mornings on last Thursday of each month 10.30 – 11.30

September 27th (in aid of Macmillan Cancer Support)
October 25th
November 29th
December 13th

Our rooms are available for hire.

Contact Mr Whiting on 01872 864539

Frogpool & Cusgarne Football Club

We run two teams in the Falmouth/Helston League, the 1st team in Division 2 and the reserves in Division 3. We play at the Richard Jory Playing Field, Pulla Cross normally at 2.30 pm on Saturday afternoons.

To contact the club, ring Nick Mallaber on 01209 216734.

Home fixtures for the early part of the 2007-08 season:

| | <u>Division</u> | <u>Opponents</u> |
|------------------------|-----------------|-------------------------|
| August | | |
| Sat 25 th | 2 | Truro City |
| Thurs 30 th | 3 | St Day 6.15 pm |
| September | | |
| Sat 1 st | 2 | Trispen |
| Mon 3 rd | 2 | Falmouth Albion 6.15 pm |
| Sat 8 th | 3(cup) | Ruan Minor |
| Sat 15 th | 2 | Pendeen |
| Sat 22 nd | 2 | Perranwell |
| October | | |
| Sat 13 th | 2 | Rosudgeon |
| Sat 20 th | 3 | Mullion |
| Sat 27 th | 2(cup) | Pendeen |
| November | | |
| Sat 3 rd | 2 | Wendron |
| Sat 10 th | 3 | Camborne Park |
| Sat 17 th | 3 | Carharrack |
| Sat 24 th | 2(cup) | Constantine |

General Interest

To advertise in this newsletter for Christmas please contact:

Kevin Furnish on 01209 820244 or email
editor@gwennap-parish.net

Or

Alan Blamey on 01872 864601 or email clerk@gwennap-parish.net

HICKS MILL METHODIST CHURCH

Hicks Mill celebrated it's 186th anniversary recently.

Morning Service 10.30 a.m. each Sunday

Occasional evening services

Coffee Morning held on the first Wednesday of each month from 10.30 – 12.00, including

Bring and Buy stall - proceeds to charity and church funds.

Harvest Festival Sunday 9th September
10.30 a.m. Reverend Joe Ridolls
6.00 p.m. Reverend Margaret Barnes

CUSGARNE-FROGPOOL WI

QUESTION: Join the WI?

ANSWER: I'm not ready for that yet.

QUESTION: Ready for what? Membership of a forward thinking, diverse and vibrant organisation that enables women to be listened to and act upon their concerns?

Campaigning on a range of issues such as the price of Milk paid to farmers, keeping local hospitals open ?

Making new friends?

Listening to a variety of speakers?

Learning new skills, e.g. quilling, stencilling?

ANSWER: If you're ready for these you will be warmly welcomed at our WI.

WHERE? Frogpool Chapel Schoolroom.

WHEN? First Tuesday every month. 7.30 p.m.

QUESTION: Give us a try?

CONTACT :
Nina 01872 864367 Anne 01872 862083
Details of meetings on Parish noticeboards

General Interest - Crofthandy Area

CROFTHANDY METHODIST CHURCH

Service every Sunday at 3 p.m.
Everyone welcome.

Steward (and contact), Richard Snell 01209 820556

Crofthandy Village Hall

In recent years our village hall has become a sad sight. It was first used around the 1930s, the building was originally a chicken house donated by a resident of the village. The many generations of us that have had their tea treats and youth club meetings, billiards and darts and many other functions share the history of the "hut" as it became known. It has served the community well but has now reached the end of its working life. Public meetings were held and information collected from the residents of the village. The result being the committee has decided to try to replace the old building with a brand new one. It is our wish to purchase a field opposite the present site, and with a bit of luck we are hoping to secure some funding from the lottery. The village is in need of a focal point for the various social groups that exist at present, and those who wish to begin in the future.

It is possible that we may be able to proceed if we are not successful with the lottery funding. This would however be more difficult but we feel not impossible.

So it is with good faith and optimism that those of us involved in the project will be doing our very best to see it come to fruition. Steve Trelease

General Interest – Gwennap Area

Gwennap Church

GWENNAP CHURCH

SERVICES - Sundays 11.00am

| | |
|------------------|--------------------|
| 1st & 3rd Sunday | Holy Communion BCP |
| 2nd Sunday | All Age Worship |
| 4th Sunday | Matins BCP |
| 5th Sunday | Holy Communion CW |

BCP Book of Common Prayer CW Common Worship

For occasional changes of Service see Notice Board outside Church
e.g. Sunday 7 October Harvest Festival and Sunday 11 November
British Legion Service of Remembrance

GWENNAP LADIES GUILD

The Guild meets on 4th Tuesday of each month except August and December.

| | |
|---------------------|----------------------------------|
| 25 September 7.30pm | Plans for Harvest Supper |
| 23 October 2.30pm | Outing to Carrick Recycling Unit |
| 27 November 2.30pm | "At Home" |

Further information from Sue Martyn 01872 862670

HARVEST FESTIVAL

Our Harvest Festival Service of Thanksgiving and Holy Communion will be at 11.00 am on Sunday 7 October.

On Monday 8 October we hold our annual Harvest Supper and Auction of Produce in the Church Hall at 6.45pm. Proceeds of auction go to Mount Edgcumbe Hospice. The auctioneer will be Mr Richard Eddy. The evening offers Pasties and Pudding and great fun during the auction. Mr Eddy is a delight and keeps us well entertained as we raise much needed money for the Hospice. Booking essential by 5th October on 01872 862670. Posters, with full details, will be put around the Parish nearer the time.

SUMMER MUSICAL EVENINGS

The last of this year's nine Musical Evenings was held on Wednesday 1 August and given by the Redruth Amateur Operatic Society Trust with Alastair Taylor - a splendid performance of song and music in a cram-packed Church. This year was a record for both attendance and money raised. A total of £3,335 will go to Church Funds, particularly towards the laying of the new Chancel floor. Grateful thanks go to all who helped with the success of the evenings, especially Keith Hosking for organising the Concerts and the tea and sales ladies who each week provided refreshment and produce for everyone and, of course, to those who came to support the evenings and the many choirs and soloists making the concerts more popular than ever. A wonderful effort - next concert 4 June 2008, hope to see you all then.

Tony Hitchens 01209 820476

General Interest

Gwennap Church Hall

The hall is used for a variety of purposes with weekly fixed bookings including The Gwennap Under 3's and The Circle Dance Group. Other regular bookings are with Gwennap Horticultural Society, Gwennap Lunch Club, Gwennap Parish Council and the Ladies Guild. There are also many childrens birthday parties as it is an ideal venue.

Gwennap Church holds most of its social functions in the hall which include the Harvest and Bellingers Suppers, Concerts, Lenten Lunch, Jumble Sales and Exhibitions.

The hall is in good order but the general upkeep is continuous. This concerns building maintenance, weekly cleaning, annual servicing of the heating and fire equipment. The list goes on. The hall remains self funding but any new bookings to help revenue are most welcome.

The Church Hall is an old building but is well cared for. It continues to serve Gwennap Church activities and those of the local community. Tony Hitchens

Gwennap Horticultural Society

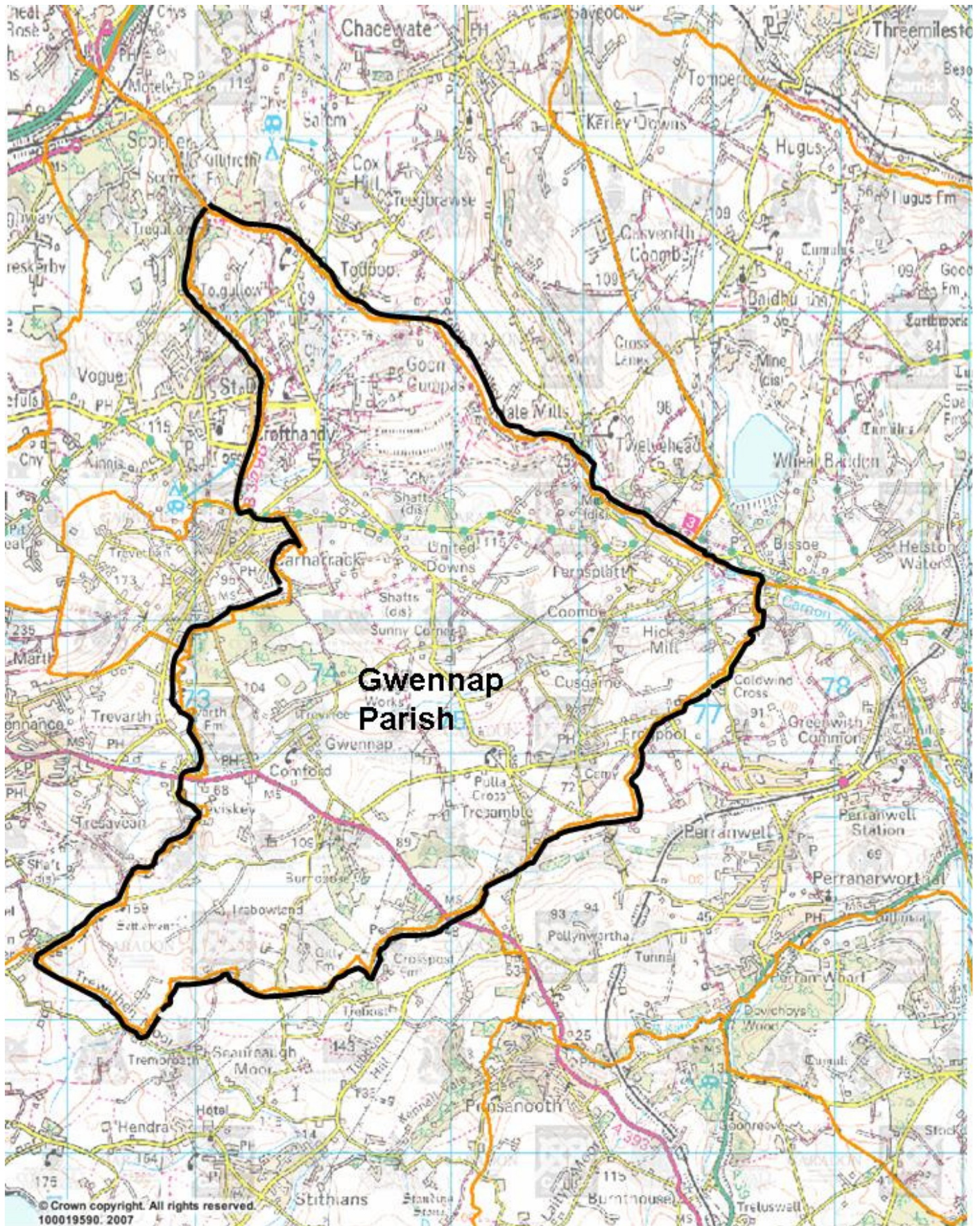
The Horticultural Society meets on the 3rd Thursday of each month, 7.30 p.m. at Gwennap Church Hall. There are often guest speakers and in the summer months, visits to gardens in the County. The remaining programme for 2007 is as follows :-

September 20th Dinner at the Church Hall
September 27th 5.00p.m. visit to Penvale, Treluswell
October 18th Mr Ron Scamp : My life with Daffodils
November 15th Mr Brian Hileys' Ancient and Modern ; an autobiographical journey of his career in horticulture.

Want to know more?

Ring the Chairperson, Brenda Coxen on 01872 863507

Where do I live? Gwennap Parish of course !!



CARRICK OLDER PEOPLE'S FORUM

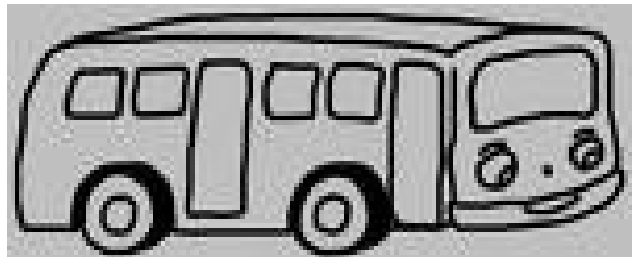
The time is long overdue for the growing population of older persons to have a voice in shaping their future. We are, therefore, working to establish a forum where this voice can be heard. In order to do this properly we need your expertise, your knowledge and your experiences.



The forum is a means of bringing older people together enabling them to work with organisations which can make things happen. We need an agenda of things which matter to you. If you are interested in becoming part of a working group to set this up, let us know.

Some issues which regularly rear their heads for example are:

- Transport (hospital parking, buses)
- Home care and Care Homes
- Housing
- NHS Dentists
- Hospital appointments
- Council Tax and Benefits
- Loneliness
- Young people
- Environment



Alternatively your interests may be more to do with leisure pursuits and social events – things you never had time to do. What are they?

If you are interested and would like further information please contact Judith Whiteley, Member Champion for the elderly in the Carrick District on 01326 374279 or email cllr-jwhiteley@carrick.gov.uk

Supported by Department of Adult Social Care and Carrick District Council



ARE YOU INTERESTED IN BUYING AFFORDABLE HOUSING OR RENTING SOCIAL HOUSING?

WE ARE HOLDING A SURGERY IN YOUR AREA ON **THURSDAY 13 SEPTEMBER**

10.00 – 11.30 **CROFTHANDY** – VILLAGE HALL

12.30 – 2.00 **GWENNAP** - CHURCH HALL

2.30 – 4.00 **FROGPOOL** - PORTAKABIN, PLAYING FIELD, PULLA CROSS

OFFICERS FROM CARRICK DISTRICT COUNCIL WILL BE THERE TO ADVISE YOU ABOUT EITHER JOINING A REGISTER OR ANSWERING QUESTIONS YOU MAY HAVE ABOUT YOUR EXISTING APPLICATION

PLEASE DROP IN

For queries or further details, please ring Carrick District Council on 01872 224639

Gwennap Church Hall

We can offer you a refurbished hall with good single level access, new toilets and kitchen facilities, suitable for all your club or individual activities:

FOR HIRE

Possible uses:

- Keep Fit
- Jumble Sales
- Exhibitions
- Lectures
- Club Meetings
- Whist Drives
- Children's Parties
(not Discos)

Very reasonable rates, available for the whole or part of a day. Special rates for regular weekly or monthly bookings.

For further information and terms
Please contact:

Mr Tony Hitchens
01209 820476

BOOK NOW!

CAR BOOT SALES !!

At the Playing Field, PullaCross on the 1st and 3rd Sunday of each month from April to September.

£3.50 per boot.

All profits from entrance fees go to maintaining the Playing Field, so come along and support us.

Sunday 6th September
Sunday 20th September

Tidy up your garage and make a profit at the same time !

Advertising, Comments,
Articles, Letters, Pictures ???
We need them all....
Send them to

Alan Blamey on 01872 864601 or
email clerk@gwennap-parish.net

or

Kevin Furnish on 01209 820244 or
email editor@gwennap-parish.net

Commercial Advertising Prices (all of which goes to support this newsletter) Black/White Full Page £50,
Half Page £30, Quarter Page £18, Eighth Page £10
Ask about Colour Ad pricing

GWENNAP UNDER 3'S
(0 to 3 years)

At Gwennap Village Hall

Every Wednesday during term time
9.30am ~ 11.30am

Come along with the children & take part in the fun!

£2.50 per child & £1.50 for each additional sibling or for children who attend with their Childminder.
Under 1's are £1.00 ~ includes a healthy snack.

Just turn up or for further details please call
Cathie on 07890 013510
or Ben on 01209 820818

